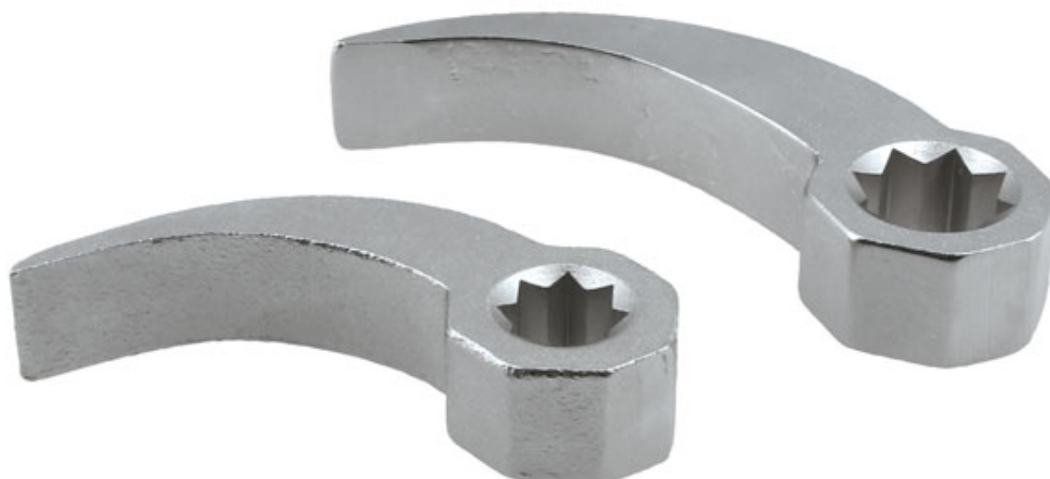


Pry Bar Wrench Set - 2pc

Laser pry bar Adaptor 2-piece set. The Laser 9206 pry bar adaptor head set is a pair of adaptors in 1/2" drive and 3/8" drive. Designed to allow any 1/2" or 3/8" D breaker bar or ratchet to be used for prying and lifting. The low-profile design, combined with the 8-point (double square) drive, allows for it to be used in a wider variety of positions than a traditional fixed head pry bar and ideal for use in hard to access areas. Both are formed with an outer hex offering the possibility of use with an open spanner.



Additional Information

- A pair of pry bar adaptor heads, for use with a breaker bar, wheel brace or ratchet. Can also be used with a 24mm & 27mm open ended spanner.
- 3/8"D x double square (8pt) profile. Overall length: 70mm. Width: 15mm. Part No. 8814.
- 1/2"D x double square (8pt) profile. Length: 75mm. Width: 15mm. Part No. 9205.
- Manufactured from SCM440 steel for strength (hardness 40-44), with a nickel-plated finish.
- The double square drive allows you to position it precisely. Ideal for use in tight spaces.

<http://lasertools.co.uk/product/9206>

